

Leaf by **haberdashery**



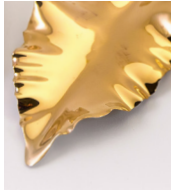
Leaf · Specifications & Finishes

## Leaf Finishes



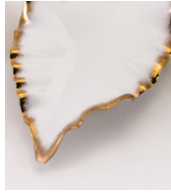
### White

Translucent  
Face: gloss white  
Back: gloss white  
Fixings: gold plated



### Gold

Opaque  
Face: gold  
Back: gloss white  
Fixings: gold plated



### Gold Edge

Translucent  
Face: gloss white with gold edge  
Back: gloss white  
Fixings: gold plated



### Platinum

Opaque  
Face: platinum  
Back: gloss white  
Fixings: nickel plated



### Platinum Edge

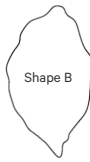
Translucent  
Face: gloss white with platinum edge  
Back: gloss white  
Fixings: nickel plated

*All of our leaves are hand finished, due to the nature of this process please note minor inconsistencies and shade variations may occur.*

## Leaf Specifications



Shape A



Shape B



Shape C

### Weight

48g (approx)

### Size

13 x 7 cm (approx)

### Material

Fine bone china

### Shape

mix of 3  
different shapes  
evenly distributed

## Fixing Finishes



Powder coated RAL 9016 ceiling plate / micro ceiling rose  
*(Leaf Fall only)*



Gold plated brass fixing



Gold coloured microfine cable  
*(Leaf Fall only)*



Nickel plated brass fixing



Silver coloured microfine cable  
*(Leaf Fall only)*

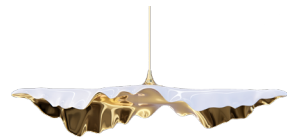
## Fixing Specifications



### Leaf Eddy

Designed for mounting leaves on walls & ceilings.  
50mm stem on socket leaf fixing.

Leaf by **haberdashery**



### Leaf Fall

Designed for suspending leaves from ceilings.  
Microfine cable on threaded leaf fixing.

[www.haberdashery.com](http://www.haberdashery.com)